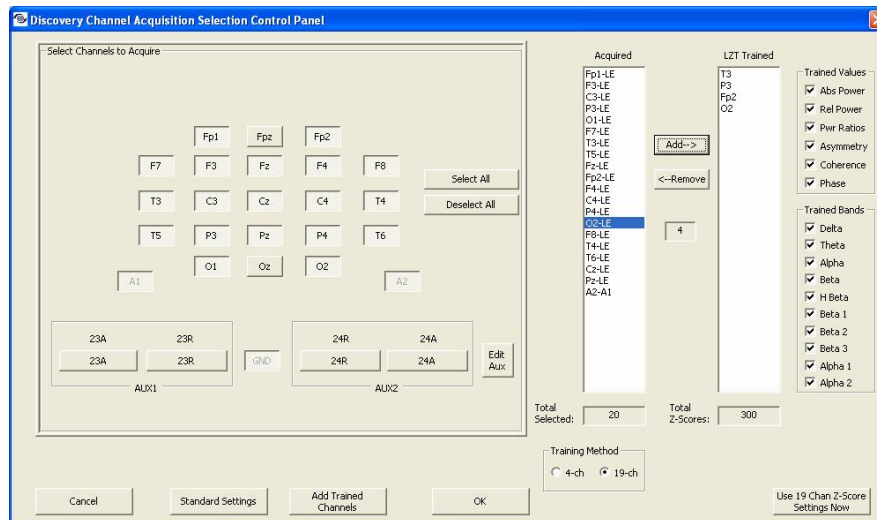


## Procedure to enable 19-channel DLL for Live Z-Score Training

- (1) Get new passkey from BrainMaster with 19-channel LZT enabled
- (2) Go into the test folder or a folder of our choice, with a PZOK protocol
- (3) Press View or Change Settings / Data Channels / Discovery Acquisition Control
- (4) Note that the Training Method control on bottom right has 19-ch enabled
- (5) Select 19-ch
- (6) Select a few channels and Add them as shown
- (7) Press OK
- (8) Press Run the Next Session
- (9) Press Go. Press OK as appropriate.
- (10) You should see: Invalid Passkey for number of channels selected.
- (11) You should see: A new license agreement.
- (12) Accept the agreement.
- (13) You should see your new A key.
- (14) Send the A key to BrainMaster or Applied Neuroscience
- (15) When you get your new B key, type it into the registration screen.
- (16) You now have 19-channel Live Z-Score training enabled.



## Procedure to enable 19-channel DLL for Live Z-Score Training

The 19-channel LZT training protocol is set up using the Discovery Channel Acquisition Selection Control Panel accessed using View or Change Settings / Data Channels / Discovery Acquisition Control.

Under Training Method, select "19-ch".

To add a channel to the training protocol, select it in Acquired, then press "Add". It will be added to the LZT Trained column, and the Total Z Scores: panel will be updated with the number of z scores to be trained. To delete a channel from training, select it in the LZT Trained window, and press "Remove".

To select the Trained Values, turn the selections on or off in the Trained Values control.

To select the Trained Bands, turn the bands on or off in the Trained Bands control.

The Total Z Scores: will be updated. Typically, between 300 and 1000 z scores should be trained.

Press OK, Use these settings, and Run the Next Session.

You can change the LZT Trained settings live (on the fly) and press 'Use 19 chan z score settings now' to use them in the program. All channels you want to train have to be acquired (obviously).

You can of course acquire channels that you do not train.

If you use 19-channel z-score training, the 4 "training channels" in Data Channels / Electrodes and Trainee Info will still show up as separate training channels and can be trained using go, stop, etc. in addition to the 19-channel LZT training. They work together. The 4 training channels in Data Channels / Electrodes and Trainee Info are still available as training channels, independent of the LZT training. So you can continue to do any other type of training, e.g. theta down, SMR, alpha up, etc., along with 19-channel LZT training.