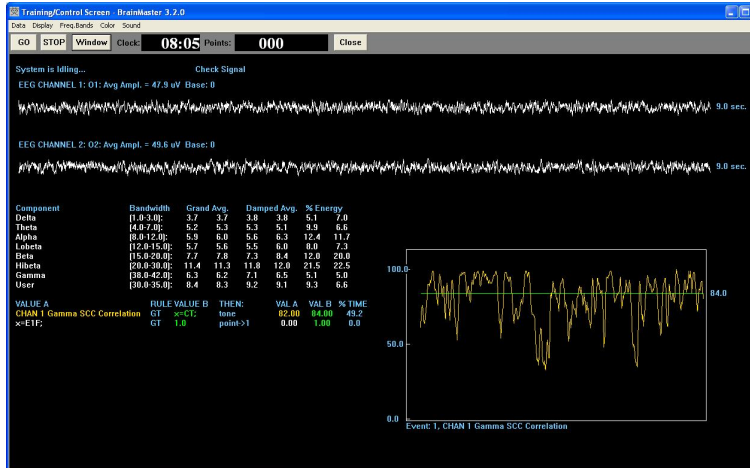


Example “Gamma SCC Uptraining”



The gamma Spectral Correlation Coefficient (SCC) is shown by the orange text and orange trend line. The threshold is shown in green.

The SCC threshold is raised by pressing the “c” key.
The SCC threshold is lowered by pressing the “C” key.

This protocol makes a sound when the Gamma SCC is above threshold.
The text status area shows the current value of the SCC, and the current value of the threshold, and the % time that the SCC is above threshold.

It also controls the multimedia, DVD, CD, and Flash games.

