

ATLANTIS and 2EB HARDWARE and USB INSTALLATION

*Note: Do these steps to install the hardware **ONLY** after the software has been installed. If you plug in the unit to the computer prior to installing the software, you may encounter difficulties in the process. If you have not yet installed the software, go back to Chapter 2 and follow the instructions for installing the software.*

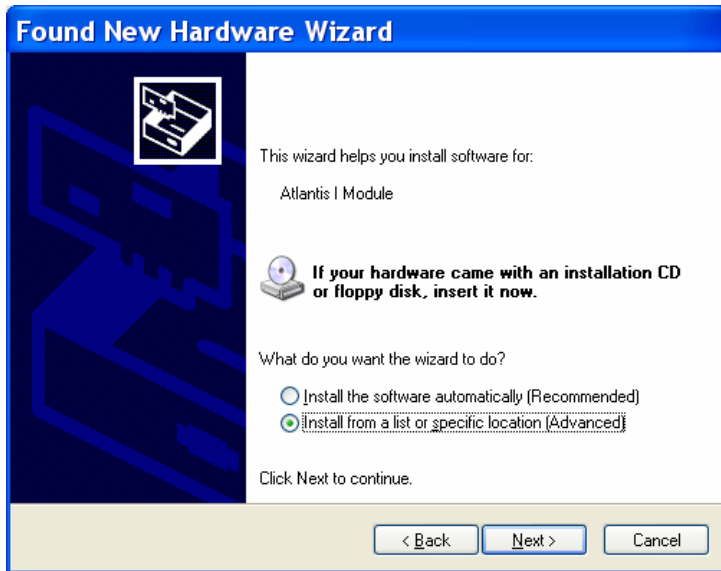
The first step is to use the cable provided to connect the USB cable to the Atlantis or 2EB module, and then connect the USB cable into one of the USB ports on the computer.

The first thing you will see is a balloon message in the lower right hand corner of your computer that states “Found new hardware”.

This will then open the “Found New Hardware Wizard”. When you see this window, check the “**no, not this time**” circle, and then click “next”.



At this window, check the “install from a list or specific location” circle, and click “next”:



At this point, check the “Include this location in the search” circle; but if the drop-down menu window under this line does not show “c:\brainm.20\USBfiles”, you’ll need to navigate to that location to make this show in the drop-down menu window. To do so, first click on the “Browse” button:



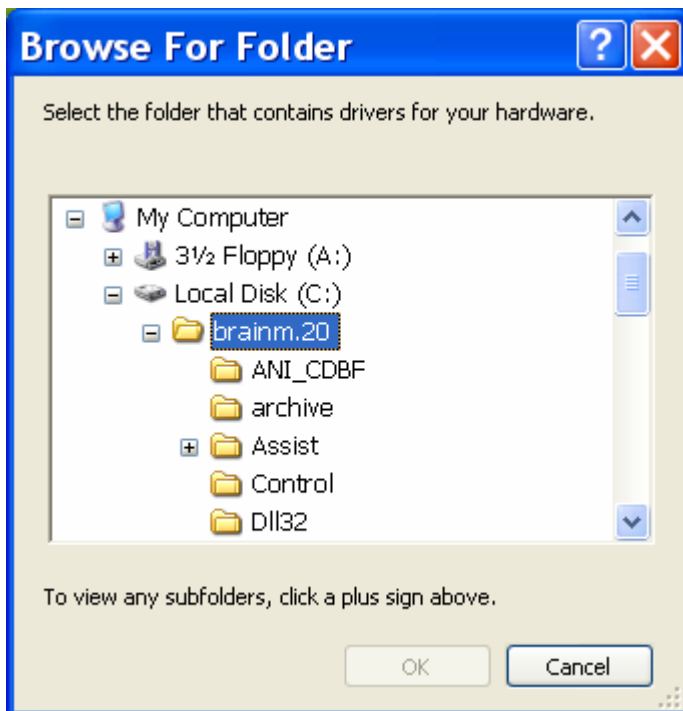
First click on “My Computer”



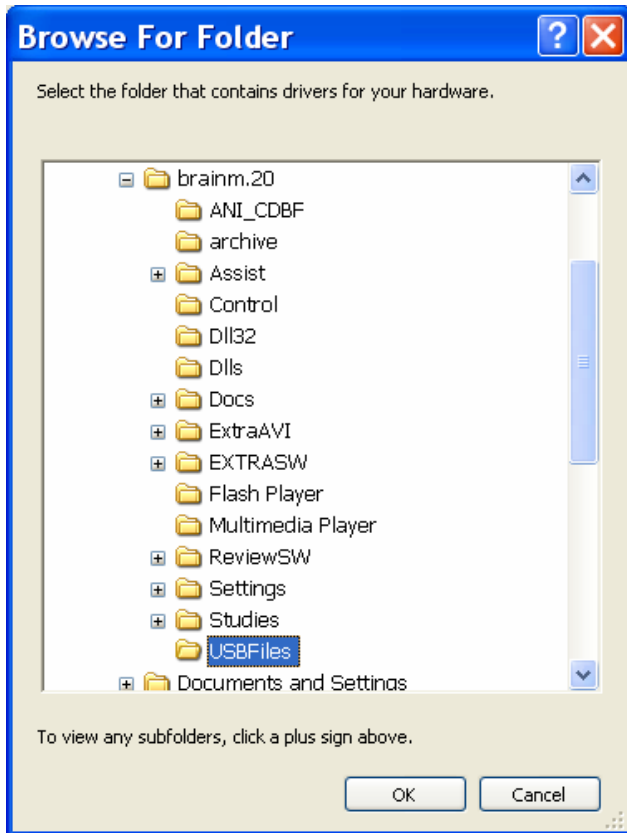
Then click on “Local Disk (c:)”



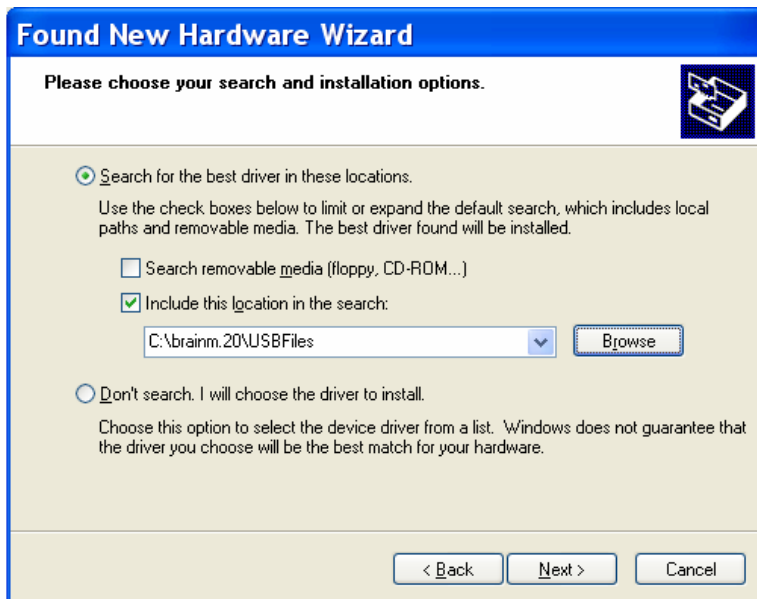
Then click on “brainm.20”



Then scroll down and find the folder named “USBfiles” and click on that file name and click “ok”:



At this point “**c:\brainm.20\USBfiles**” should now show in the drop-down browse window; make sure that only the “search for best driver from these locations” circle is checked and the “include this location in the search” box is checked; then click “next”:



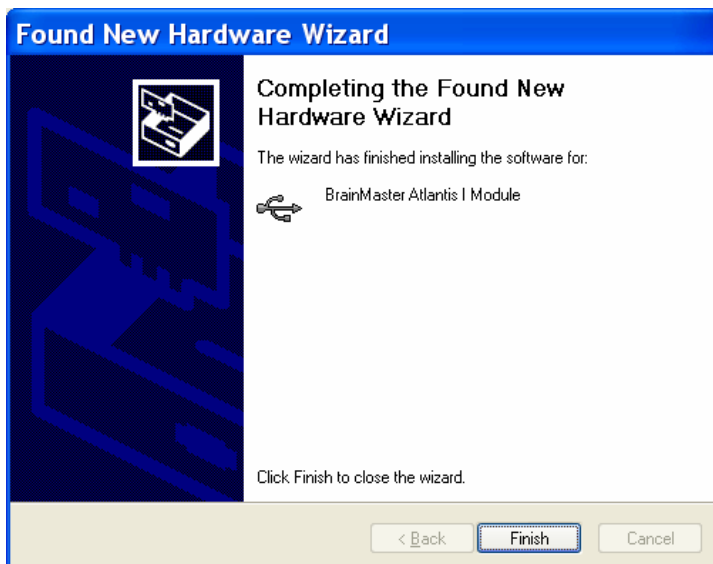
If this window comes up during the installation process, click “continue anyway”:



At this point you will see an installation progress window show for a few moments:



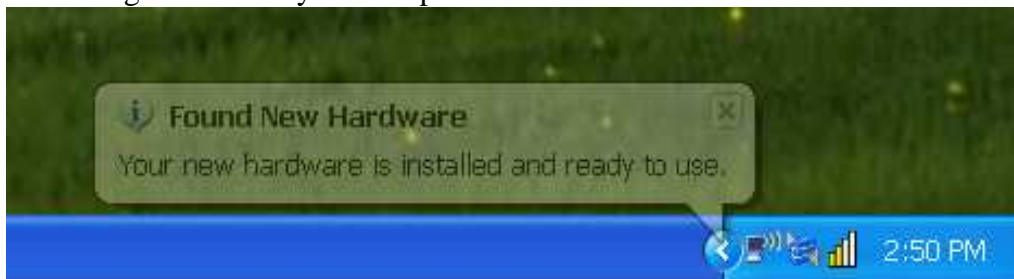
When the installation is completed, this window will display, and “Finish”:



At this point you will *again* see a “Found New Hardware” wizard window, as the computer now needs to install the USB port. Below are the text instructions which are the same as the ones above. Refer to the above pictures if you need to know what the screens look like.

- At the second “Found New Hardware Wizard” box, again, check the “no, not at this time” circle and “next”
- On the next screen check the “install from a list or specific location” circle and click “next”
- On the next screen “c:\brainm.20\USBfiles” should automatically be in the “include this location in the search” browse window, and again, make sure that only the “search for best driver from these locations” and “include this location in the search” boxes are checked; then click “next”:
- On the next screen box click the “continue anyway” box
- On the next screen box the progress of the install will be shown;
- And then finally you will again get a Found New Hardware box and click “Finish”.

At this point you will get a confirmation that the hardware is ready to use by a message balloon at the bottom right corner of your computer screen:



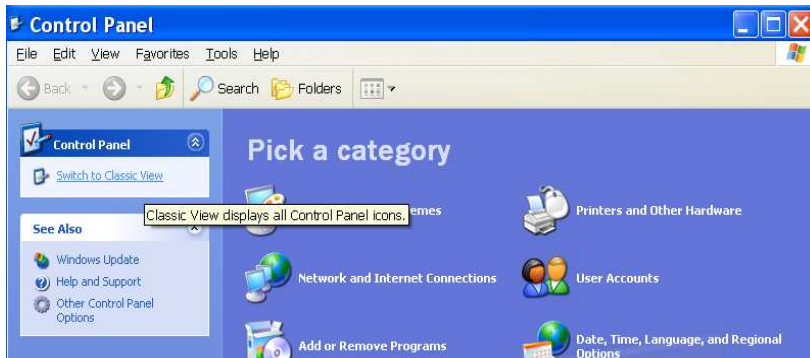
IDENTIFYING COM PORT HARDWARE INSTALLED ON:

The next necessary step is to identify which com port the hardware has been assigned to in order to designate this in the Brainmaster software.

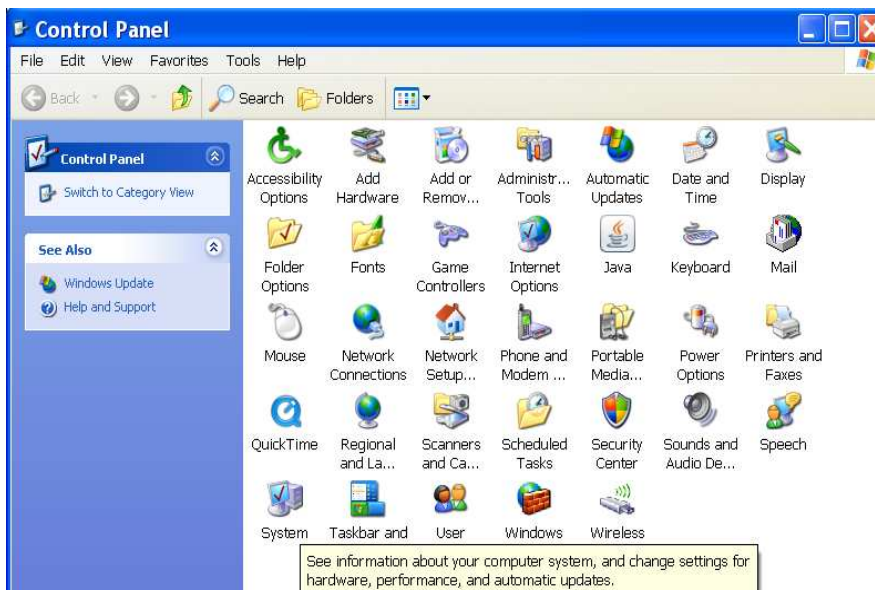
Highlight the Start Menu, and click on “Control Panel”



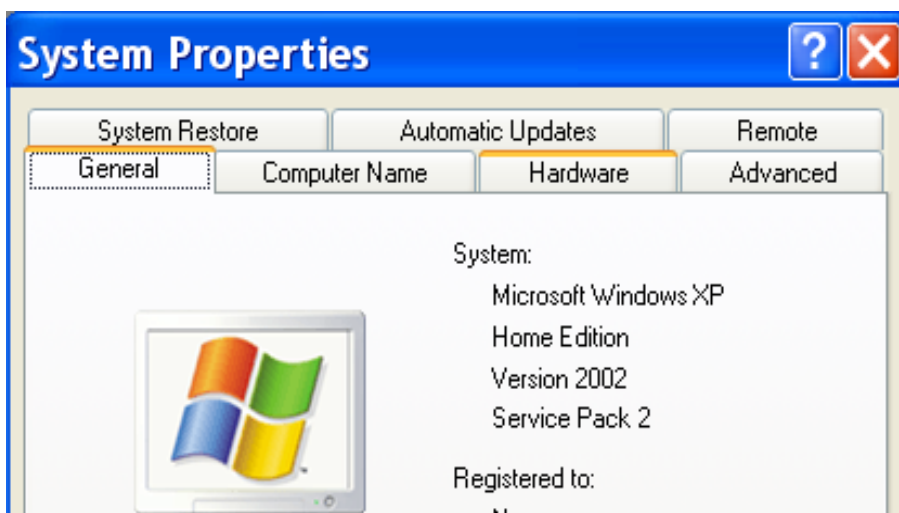
If your computer is set to “category view”, switch to “classic view” by clicking the option of “Switch to Classic View” on the left panel:



With the “classic view” of control panel, locate the “system” icon and double click on it (the icons should be in alphabetical order); double click on the “system” icon:



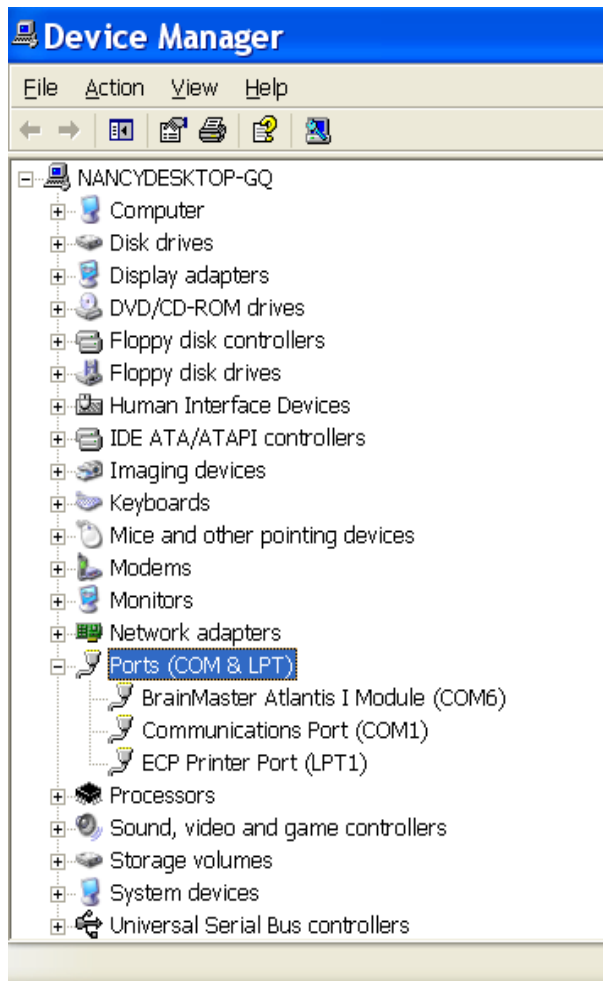
When this window comes up, click the “Hardware” tab:



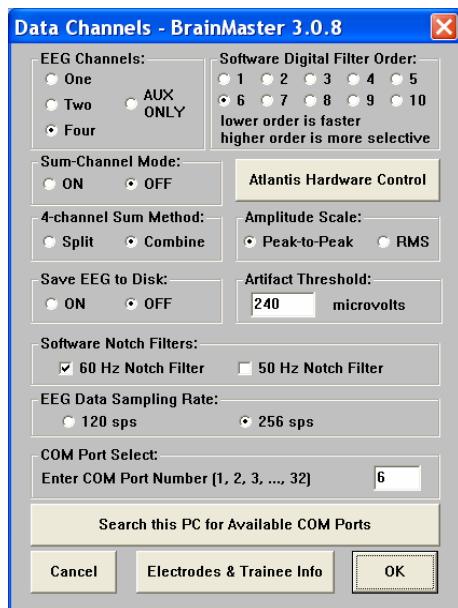
When this window comes up, click on “Device Manager”:



When the following window comes up, scroll down and click on “Ports (COM & LPT)”, and the *Brainmaster Atlantis* unit should be listed:



The Com port assigned (the COM#) should be assigned to a number between 1 and 32; preferably between 1-8. Make note of which Com port the Atlantis is installed on for the first use of the Brainmaster software. The Com port which is assigned here must match the Com port which is shown in the Brainmaster software (seen at this Brainmaster software window):



CHANGING THE COM PORT that the HARDWARE is INSTALLED ON:

If you need to change which Com port the Atlantis is assigned to, follow these instructions.

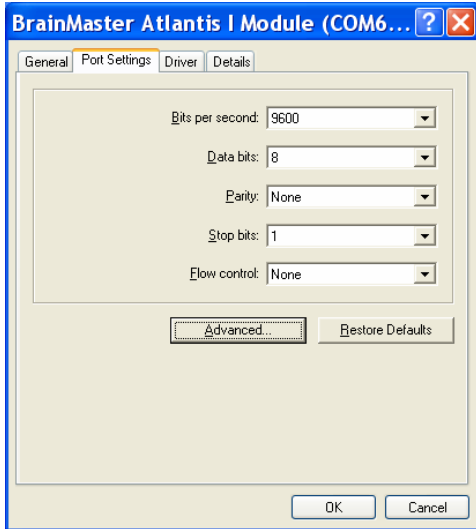
First, with the Device Manager window still up; right-click on the Brainmaster Atlantis Module listing, and then on the drop-down window, left-click on the word "Properties":



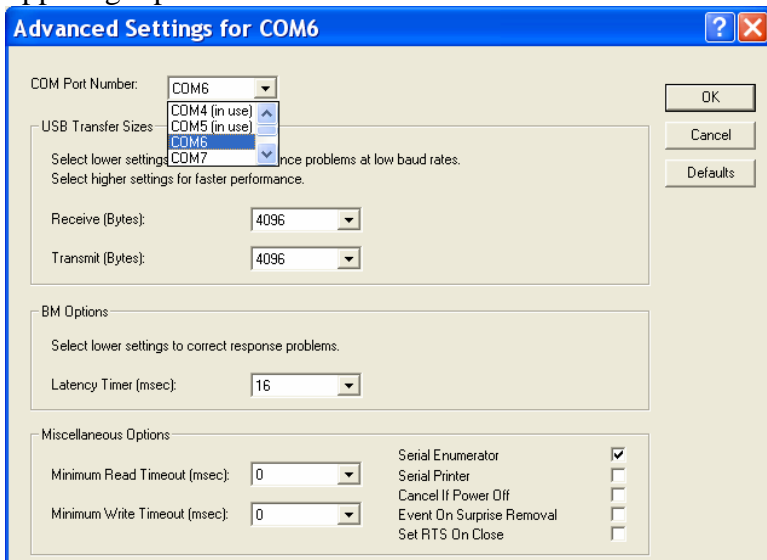
Next, at this window, click “Port Settings”:



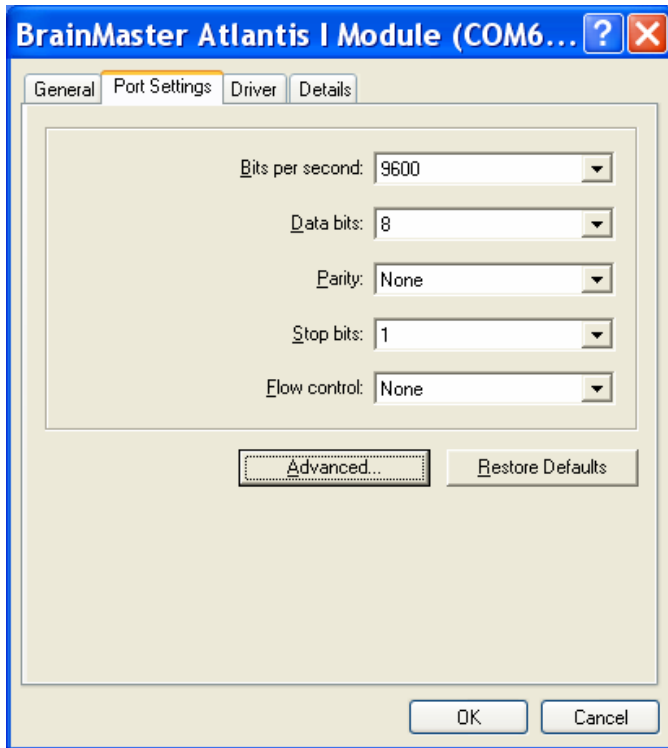
Next, at this window, click on the “Advanced” tab:



Next, on the drop-down menu next to the “Com Port Number”, choose, by clicking on and highlighting a Com port number that does **not** have the words “(in use)” next to it, and then click “ok” which is in the upper right part of the window :



When you get back to this screen, just click “ok”:



When you get back to the Device Manager screen, close the screen. Then at the System Properties screen, again click on “Device Manager” and then “Ports (COM & LPT)” to verify that the correct Com port change has been made. Then close the Device Manager screen and then close the System Properties screen. You are now ready to go on and use the Brainmaster software and hardware.