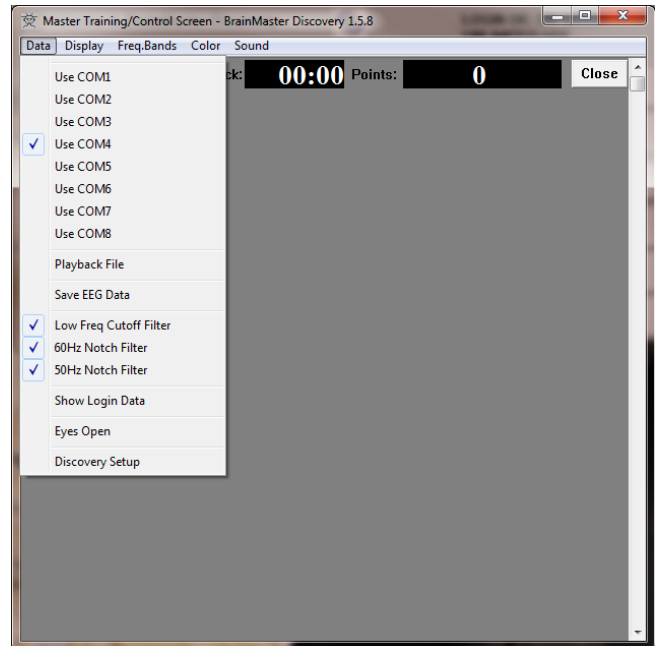
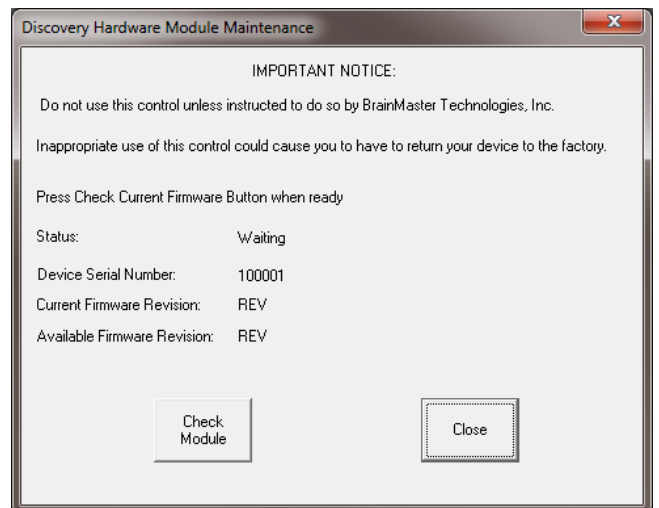


Discovery Firmware Field Programming

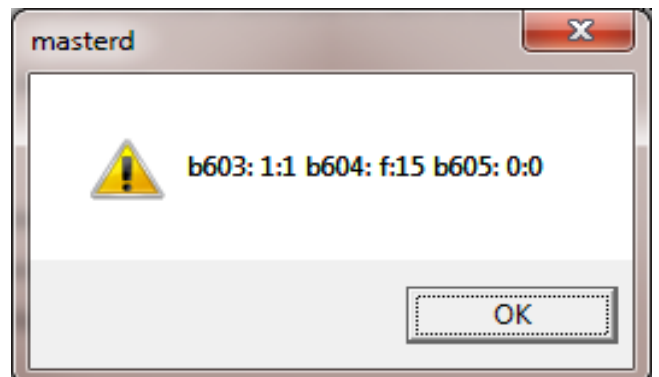
1. Firmware Field programming is performed in the Training/Control Screen. Begin by clicking the “Data” tab, then choosing “Discovery Setup”. **PLEASE NOTE: You must be running the latest updated version of the Discovery software in order to update the Discovery Firmware.**



2. When the “Discovery Hardware Module Maintenance” Window appears, click the “Check Module” Button.

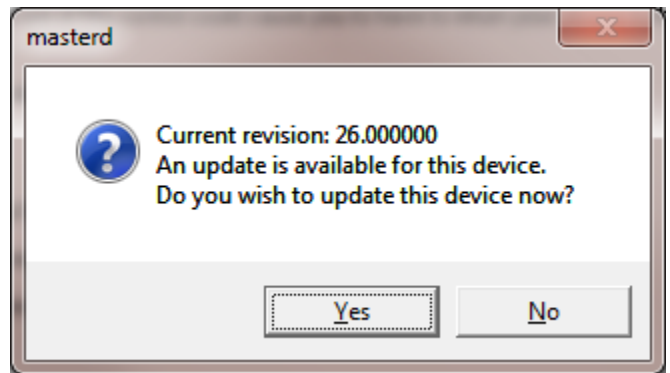


3. When the following box appears, click “OK” to continue. **PLEASE NOTE: The text that appears might be different to the text that appears on your screen.**

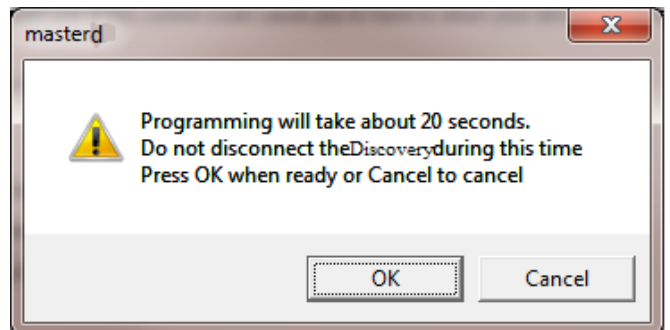


Discovery Firmware Field Programming

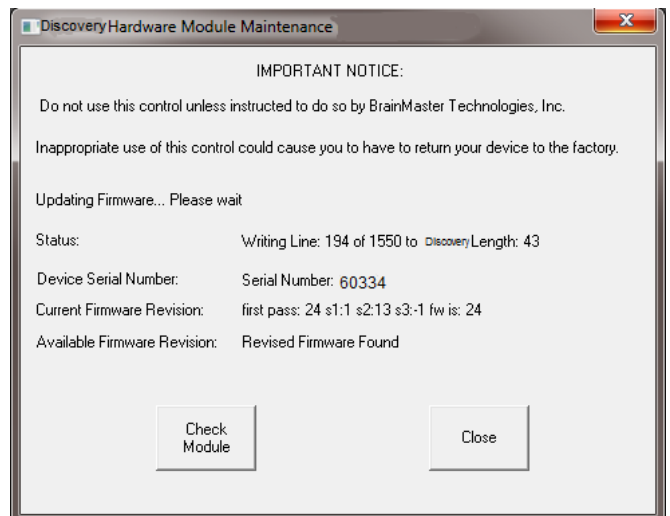
- The following screen will you know your current firmware revision. Click “Yes” to continue.



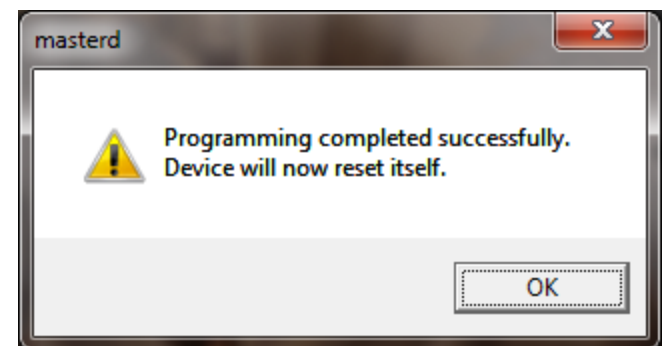
- The following window will give you instructions. Be sure to follow these instructions, and click “OK” to continue.



- The “Discovery Hardware Module Maintenance” Menu will now begin to update the firmware. **PLEASE NOTE: During this process, make sure that nothing else is to be occurring as this can cause problems in writing the Discovery Firmware. You can tell that this is occurring, because, the Status line number will be changing.**



- When the following screen appears, click “OK” to continue. On the “Discovery Hardware Module Maintenance” menu, click “Close”



Your Discovery is now using the most up-to-date Firmware.