

2.5SE SOFTWARE INSTALLATION

IMPORTANT NOTE: Make sure to install this Brainmaster software BEFORE attempting to plug in the Atlantis or 2EB Hardware module. The first step in the installation process is to install the SOFTWARE FIRST, then after you have successfully installed the appropriate software, the hardware can easily be installed.

Installing from the Internet:

The preferred method of software installation is to use the files available on the Brainmaster website via the internet.

The current URL for the 2.5SE software is at: <http://www.brainm.com/software/2.5/>

If the above URL's do not point to the correct page for installing the current software, go to the Brainmaster Technologies website (www.brainmaster.com) and find the most current URL for software updates there.

Installing from an Installation CD method:

If you prefer to use an installation CD to install the Brainmaster software, simply insert the CD into your computer and follow the onscreen instructions. If you do not see anything onscreen, the double-click on "My Computer" and select the CD drive, and right-click on it to get to the menu item "Open". Opening the CD will get you to the instructions. If you are using Mozilla Firefox instead of Microsoft Internet Explorer, the details may differ. You may need to first "save" each file, then run it from your "Downloads" area in Firefox. The following installation instructions are based on the internet-source (i.e. downloading from a website) installation approach. Installing the software from an installation CD may mean the screens you see during the install process may be slightly different than depicted in the instructions that follow.

Important Recommendation:

It is highly advisable to have no other programs running during this installation process; close out all other running programs prior to clicking on "Run".

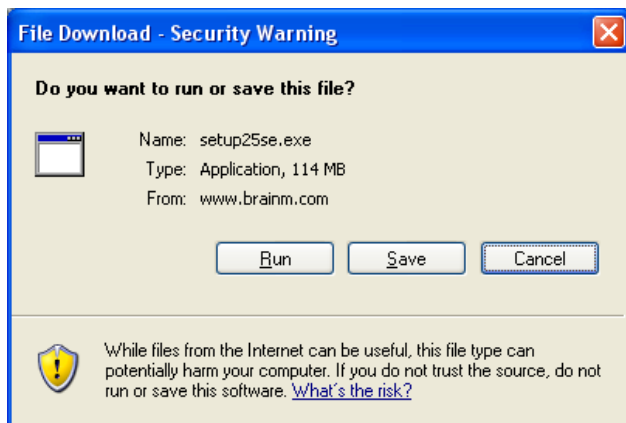
Steps to Installing the 2.5SE Software

To install the 2.5SE software, if you haven't already done so, go to <http://www.brainm.com/software/2.5/> and following the instructions below.

When you go to the URL listed above, you will come to the following screen; click "HERE":

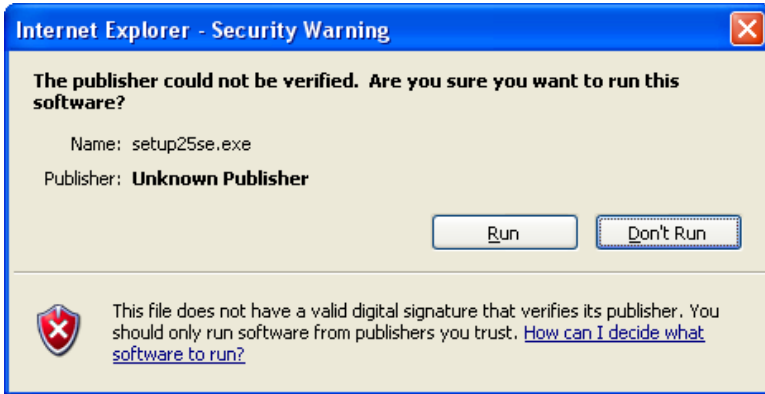


When you see the following screen, click on "Run":

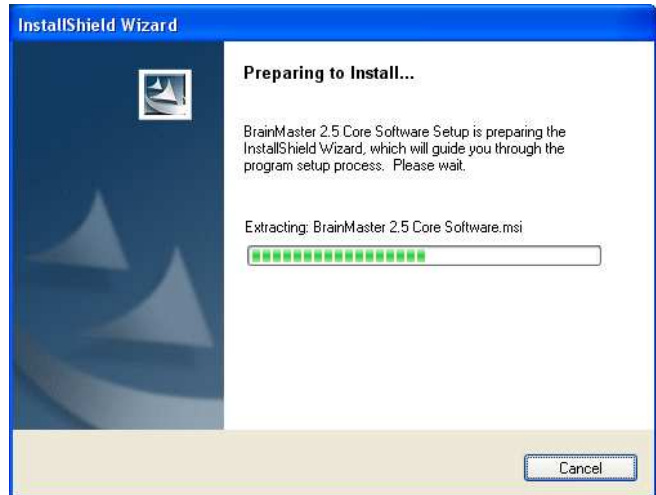
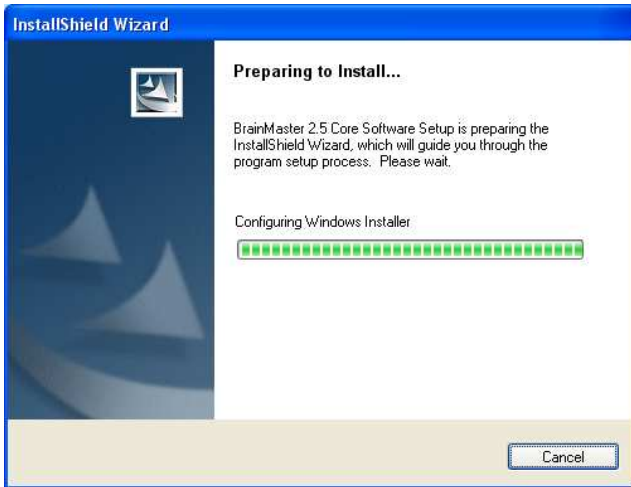


A download progress screen will appear next and it will take a several minutes to download the file, depending on your particular internet connection speed.

When you see the following screen, click on “Run”:



You should then see the following two progress displays:



This process may take a few minutes, depending on your particular computer configuration, size, and efficiency.

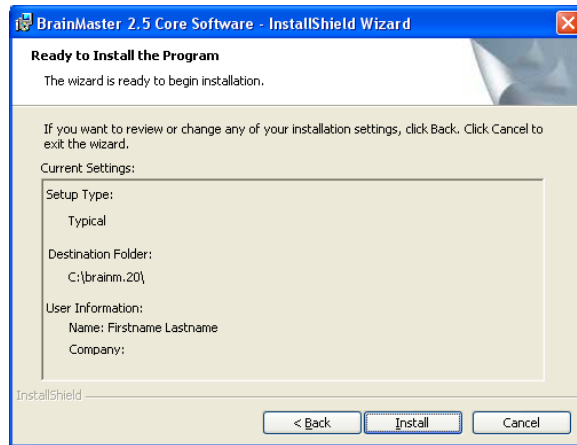
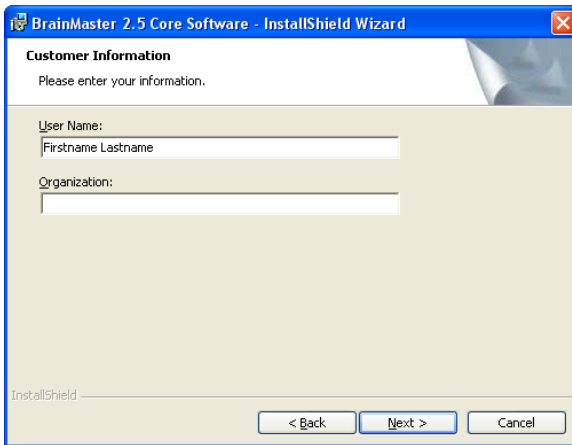
After a brief time, you should see the following screen. Click on “Next”:



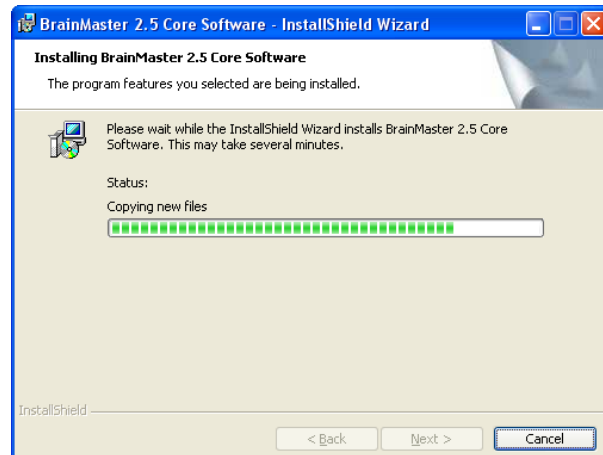
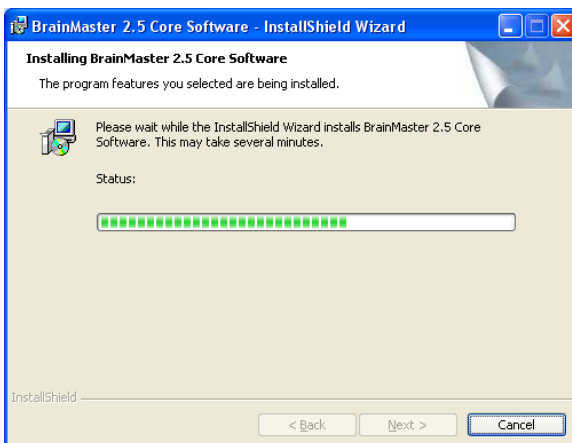
When you see this screen, you can print the license agreement if you wish; otherwise, in order to proceed you must click the option for “I accept the terms in the license agreement”; then click “next”:



Then you will see these screens; you may fill in the boxes if you wish, click next on each to continue:



More progress screens, no action is needed, just wait:



When you see the final installation screen and click “Finish” The 2.5SE software is now installed:



The 2.5SE Core software is now installed. It is NOT necessary to restart your computer. At this point you should check to make sure you have a shortcut on your desktop. If the shortcut was not automatically created, see the section below for instructions on creating a shortcut.

If you are using the 2E or 2EW module, and are using the serial port to connect your device, you have completed the software install process and can now connect your unit to your computer. If you are going to use a USB to serial converter, if you have not already done so you need to install that converter device before connecting your unit to the computer.

If you are using the 2EB or Atlantis module, you will now need to install the hardware device drivers. Go to the document titled “Atlantis or 2EB Hardware and USB Installation” for steps on how to complete this process.

Creating a Shortcut

In most installation environments, for the 2.5SE software, a short-cut will automatically be created on your desktop, however if this does not happen, you’ll want to manually create short-cut.

Creating a Shortcut in Windows XP:

Go to c:\brainm.20 and find the file "bsetup30.exe" or “BSetup25.exe”. Then right-click on the file and select "send to desktop (create shortcut)". You will use the 3.0x shortcut to run the 3.0x software and will still be able to use the 2.5SE shortcut to run your 2.5SE software.

Creating a Shortcut in Windows 95/98/NT/2000 users:

- Double Click on “My Computer”
- Double Click on “C:” or “Local Disk (C)”
- Double Click on “Brainm.20”
- Find the icon for “Bsetup” or “Bsetup.exe” (either bsetup3.0.exe or BSetup25.exe)
- Single Right Mouse Click on Bsetup file
- Select (single left mouse click) the menu item “Send To”
- Select (single left mouse click) the menu item “Desktop (Create Shortcut).
- The BSetup exe. icon should now be on your desk-top and from this point on all you have to do is double click on this icon to open your BrainMaster program.