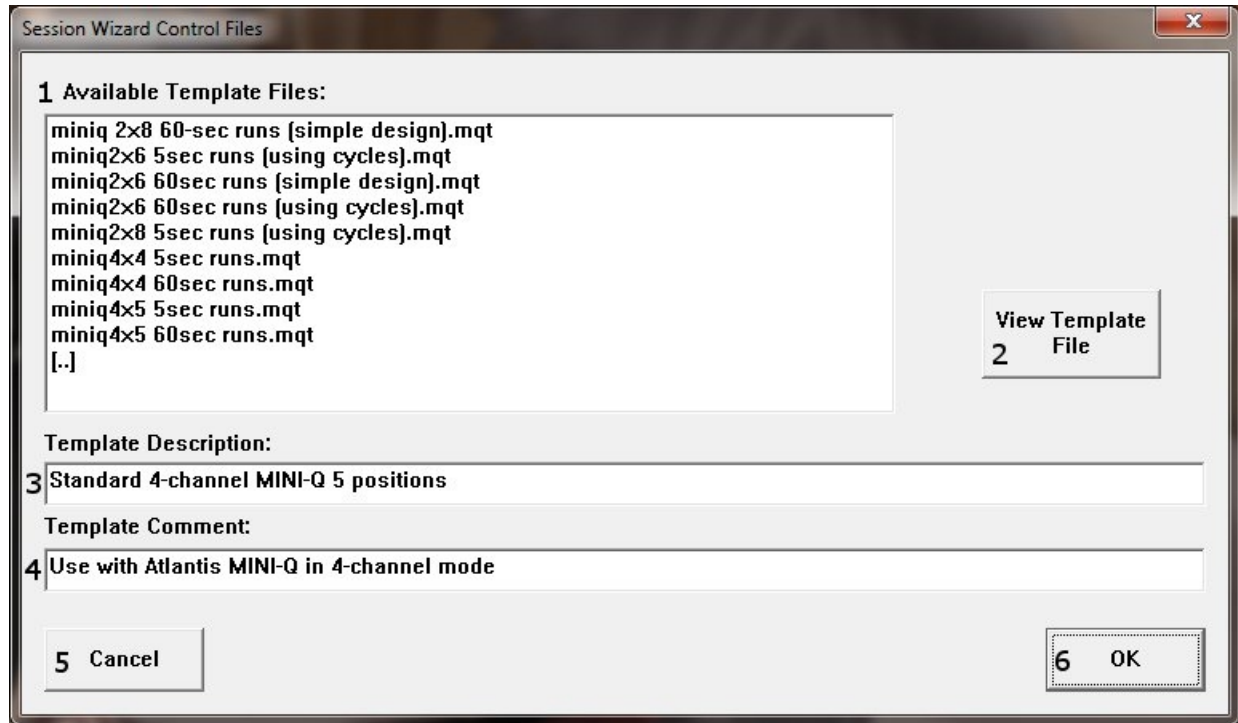


# Session Wizard

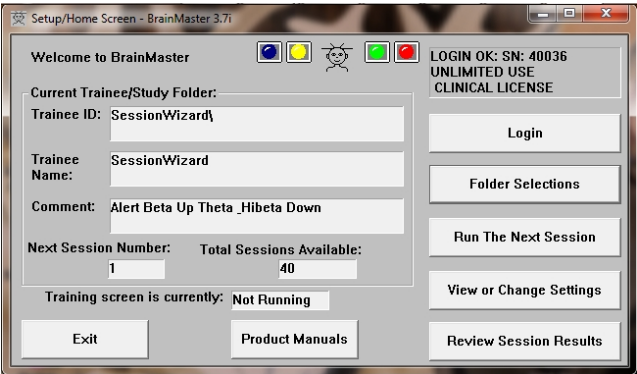
## Session Wizard Control Screen



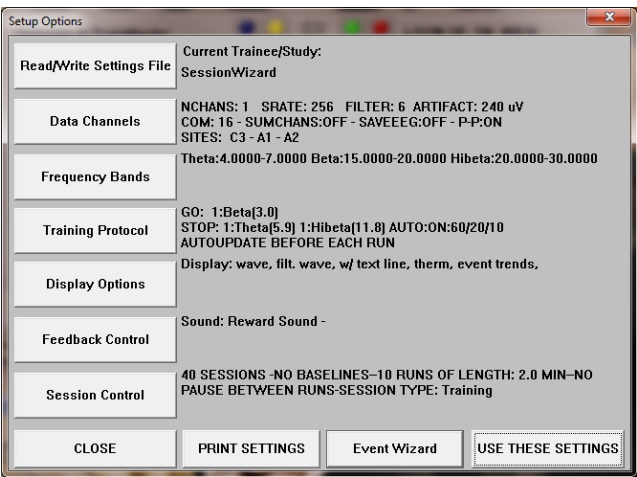
1. **Available Template Section** – Section where you can choose the Session Wizard Template you would like to use.
2. **View Template File Button** – Click to View the Template of the Session Wizard Template that has been selected.
3. **Template Description Section** – Section that displays the Template's description of the selected Session Wizard Template.
4. **Template Comment Section** – Section that displays the Template's comment of the selected Session Wizard Template.
5. **Cancel Button** – Click to cancel any selections and exit the Session Wizard Control Screen.
6. **OK Button** – Click to confirm the selections and exit the Session Wizard Control Screen.

## Loading a Protocol that has a Pre-Loaded Session Wizard File

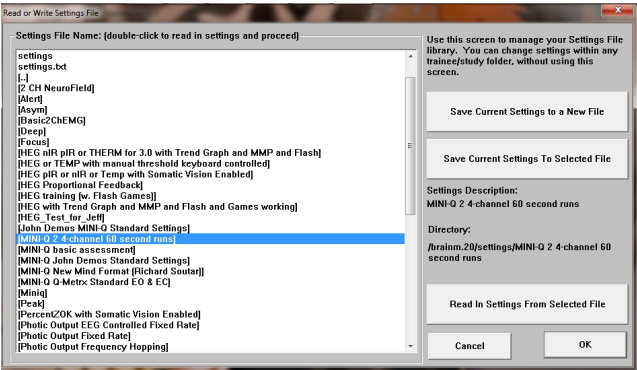
1. Choose a file that you would like to use.  
From the Setup/Home Screen, click the View or Change Settings Button.



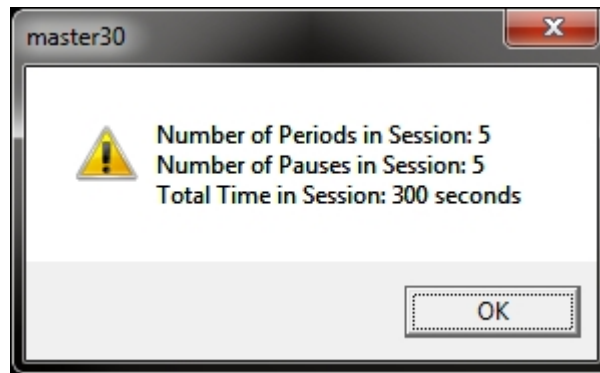
2. From the Setup Options Menu, click the Read/Write Settings File Button.



3. From the Read or Write Settings File Menu, double-click the settings protocol that you would like to use, and load this protocol, by double-clicking. Confirm all changes and run your session

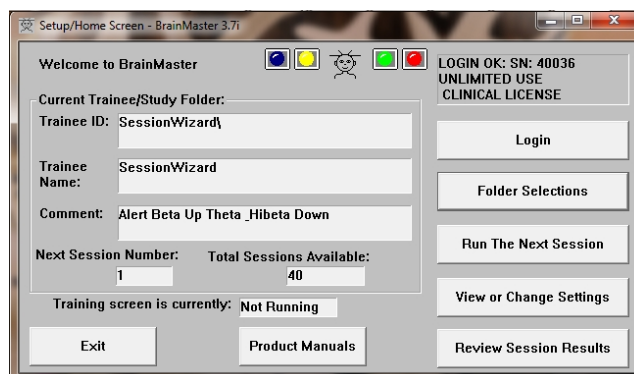


The System will now run the Session Wizard File. You will be able to tell this, as there will be a message stating the Number of periods, pauses, and total time in the session.



## Loading a Session Wizard File to a Pre-Existing Protocol

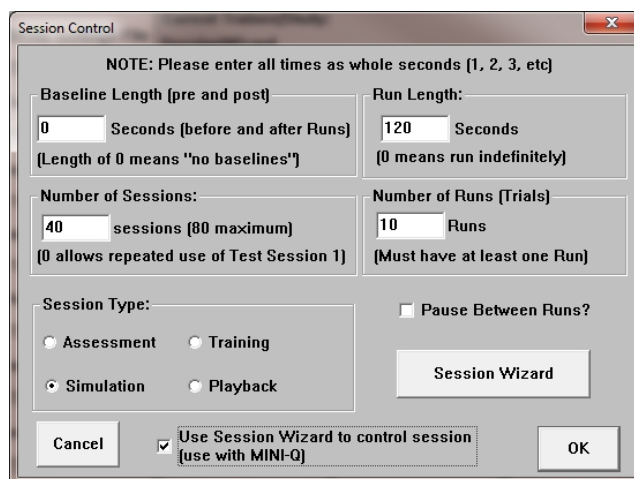
1. Choose a file that you would like to use.  
From the Setup/Home Screen, click the View or Change Settings Button.



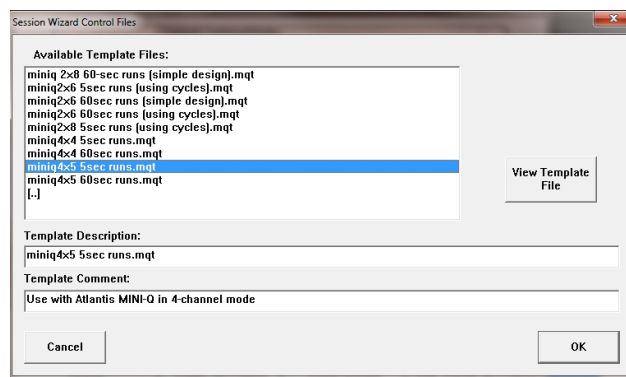
2. From the Setup Options Menu, click the Session Control Button.



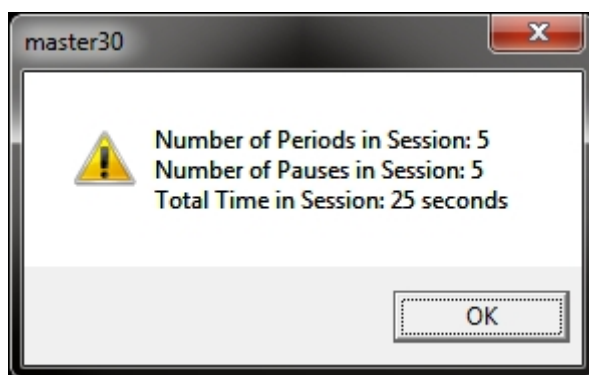
3. From the Session Control Menu, first click the Check Mark Box to use the Session Wizard to control the session. When this is complete, click the Session Wizard Button.



4. From the Session Wizard Control Menu, choose the Session Wizard Template you would like to use. When you have the file you would like, click the OK Button to confirm the choice. Confirm all changes and run your session.



The System will now run the Session Wizard File. You will be able to tell this, as there will be a message stating the Number of periods, pauses, and total time in the session.



## Data Dictionary for the Session Wizard

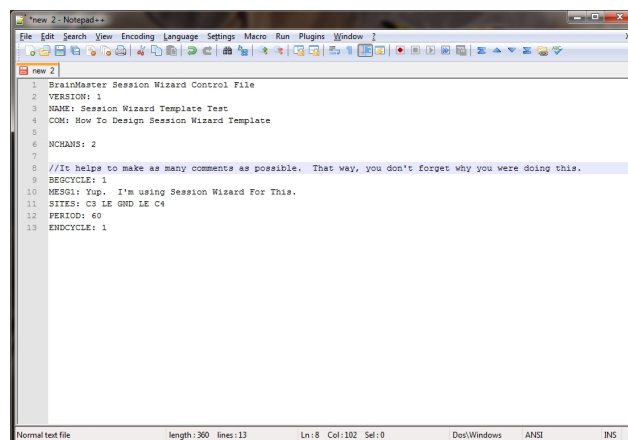
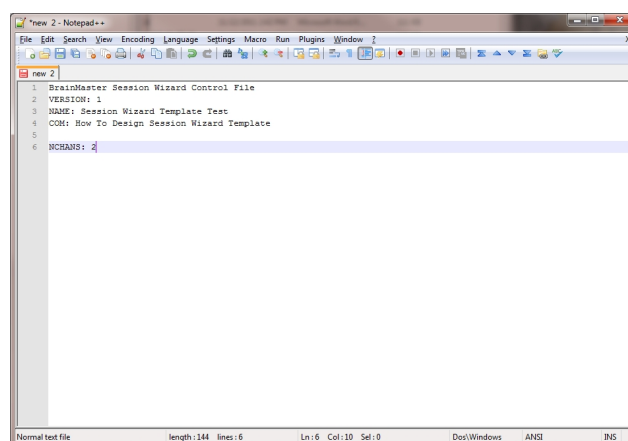
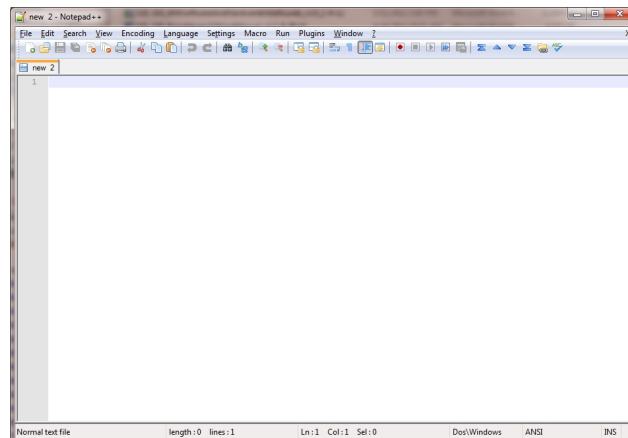
Session Wizard Basic Variables	
NAME	Defines the name of the Session Wizard Template. The name placed here, will be in view on the Session Wizard Control Screen.
VERSION	Defines what version of the Session Wizard Template. This is not displayed anywhere only in the actual Session Wizard Template
COM	Defines the comment of the Session Wizard Template. The comment placed here, will be in view on the Session Wizard Control Screen
NCHANS	Defines the number of channels that will be used by the Session Wizard Template.
DO	Starts the Session Wizard Template.
DONE	Ends the Session Wizard Template.
//	Classifies a comment for the user. Use to place comments in your Session Wizard Template, with-out the Session Wizard seeing these comments.
BEGCYCLE	Begins an area to create a pre-defined cycle to be used in the DO section of the Session Wizard Template. The CYCLE is created outside of the DO Section.
ENDCYCLE	Ends an area to create a pre-defined cycle to be used in the DO section of the Session Wizard Template. The CYCLE is created outside of the DO section.
DOCYCLE	Used in the DO section of the Session Wizard Template. Calls to a pre-defined CYCLE with-in the Session Wizard Template.
Session Wizard Session Variables	
MESG1	Displays a message before the run begins.
MESG2	Displays a message after the run ends.
SITES	Programs the run for the specific locations that will be acquired/trained.
PERIOD	States how long the run will be
FEEDBACK	Variable that can be used for the Session Wizard Template. This value will only be kept for the period declared.
DUTY	Percentage Variable that controls the FEEDBACK variable. This allows FEEDBACK to be worth its stated value for the percentage of time of DUTY (If PERIOD is 30, FEEDBACK is 10, and DUTY is 50, then FEEDBACK=10 for the first 15 seconds and 0 for the last 15 seconds). This value will only be kept of the period declared.
INTENSITY	Variable that can be used for the Session Wizard Template. This value will only be kept for the period declared.

Session Wizard Session Variables for Discovery	
EYES OPEN	Creates an EDF File with the EO mark when the PERIOD is complete.
EYES CLOSED	Creates an EDF File with the EC mark when the PERIOD is complete.
TASK	Creates an EDF File with the TASK mark when the PERIOD is complete. You will have to declare the Task for this.
Session Wizard Session Variables for Peripherals	
PHOTICRATE	Variable that sets the rate for Photic glasses to be used for the Session Wizard Template. This value will only be kept for the period declared.
PHOTICENABLE	Enable or Disable Photic Output. 1 Enables Photic Output. 0 Disables Photic Output.

## Designing a Session Wizard Template

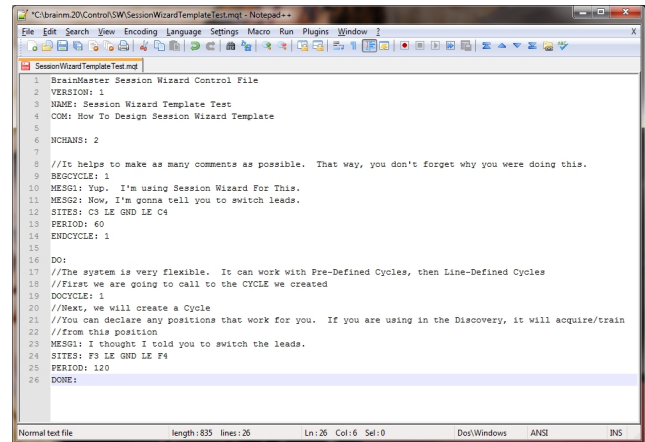
**PLEASE NOTE:** A Session Wizard Template can be designed in any Notepad-based program. It is recommended to use Notepad++. For more information on Notepad++, please visit <http://notepad-plus-plus.org/>.

1. Open your Notepad-based program.
2. Create your Header information. The Header information will contain the Line “BrainMaster Session Wizard Control File”. It will also contain the Version, Name, Comment, and Number of channels.
3. Next, create any cycles that will be used. If you are not using the CYCLE feature, this is not needed.





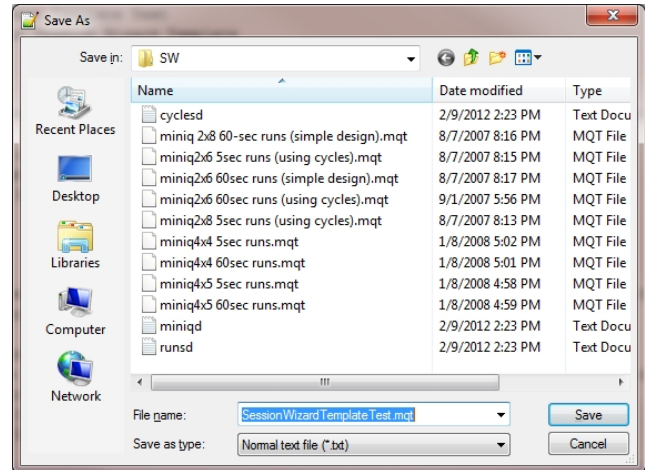
4. Now, create the DO section of the template section of the Session Wizard Template. All that is created in the DO section will control the session. When the DO section is completed, end with DONE.



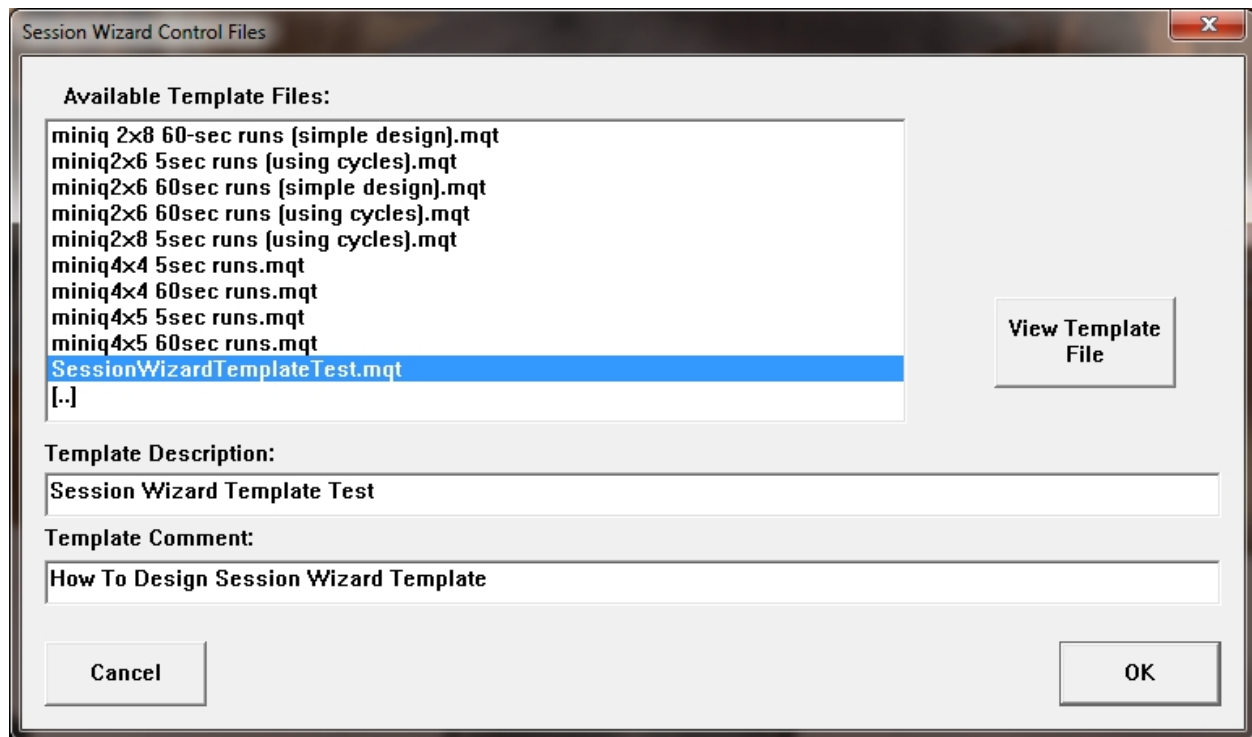
```

1 BrainMaster Session Wizard Control File
2 VERSION: 1
3 NAME: Session Wizard Template Test
4 COM: How To Design Session Wizard Template
5
6 CHANNELS: 2
7
8 //It helps to make as many comments as possible. That way, you don't forget why you were doing this.
9 RESOLVE: 1
10 RESOLVE: 1
11 MSG1: Now, I'm gonna tell you to switch leads.
12 SITES: C3 LE GND LE C4
13 PERIOD: 60
14 ENDCYCLE: 1
15
16 DO:
17 //The system is very flexible. It can work with Pre-Defined Cycles, then Line-Defined Cycles
18 //First we are going to call to the CYCLE we created
19 DOCYCLE: 1
20 //Next, we will create a Cycle
21 //You can declare any positions that work for you. If you are using in the Discovery, it will acquire/train
22 //from this position
23 MSG1: I thought I told you to switch the leads.
24 SITES: F3 LE GND LE F4
25 PERIOD: 120
26 DONE:
  
```

5. When completed with you Session Wizard Template, it is now time to save it. The location that you will need to save this in for use is c:\brainm.20\Control\SW for use in the BrainMaster 3.0 Series Software, and c:\brainm.20\Control\SWD for use in the BrainMaster Discovery Series Software. You will save the file as “YourSessionWizardTemplateName”.mqt. If you are using a Notepad program that allows this action, no further action will be required. If you are using a Notepad program that will not support this naming, you will have to force the .mqt ending in Windows manually.



You have now created a Session Wizard Template, that can now be used for future sessions. You will be able to tell that this has been completed, by opening the Session Wizard Control Screen, and seeing your newly created Session Wizard Template ready for use.





**BrainMaster Products are manufactured by:**

BrainMaster Technologies Inc.  
195 Willis St.  
Bedford, OH 44146  
United States  
1-440-232-6000



**European Representative:**

**mdi Europa GmbH**  
Langenhagener Straße 71  
D-30855 Langenhagen

Phone: +49-511-39 08 95 30  
Fax: +49-511-39 08 95 39  
Email: [info@mdi-europa.com](mailto:info@mdi-europa.com)  
Internet: [www.mdi-europa.com](http://www.mdi-europa.com)

**REF** 531-345 v1.0 2-10-12